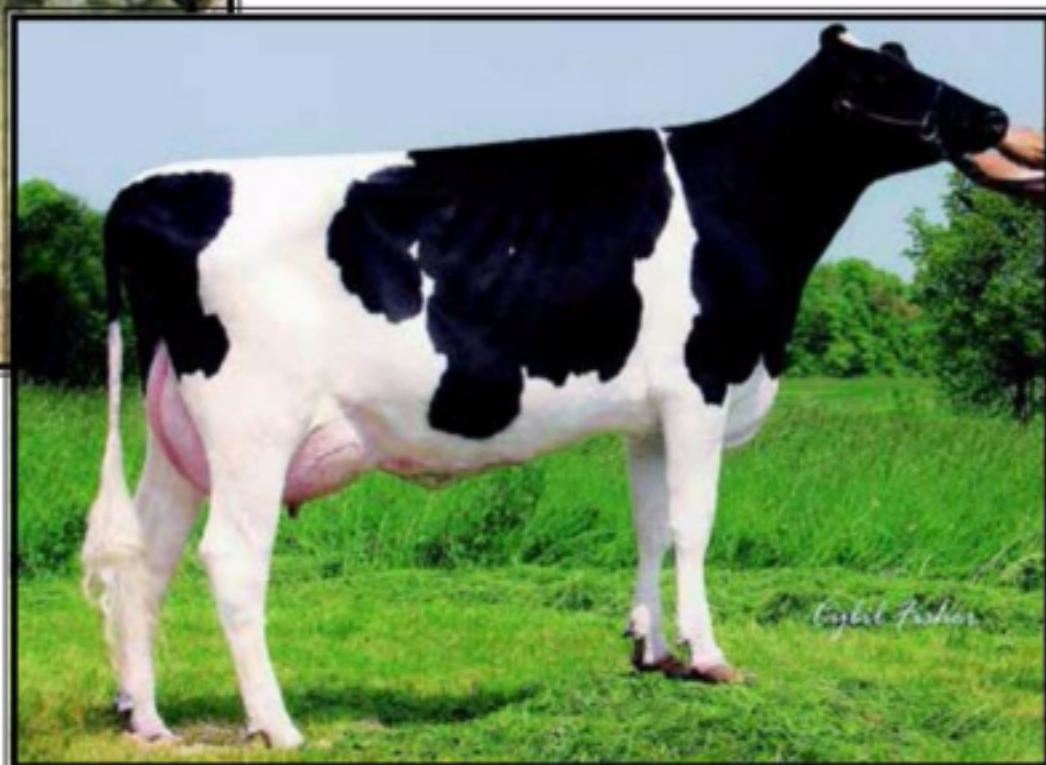


**Cook-Farm Roy Freestyle-ET
EX-93,2E EEEEE**

4-07 365 36470 3.8 1392 3.1 1121
(4th Dam of Lot 66)



**Cook-Farm BWMarsh Freeze-ET
EX-91 EEEEE GMD**

2-01 365 34080 4.0 1365 3.3 1111
(5th Dam of Lot 66)

LOT 66

Cook-Farm Silkwood

2-03 VG-85 VVV++
73720332 100%RHA-NA

Born 6/5/14

2-00 251 19829 823 4.2 607 3.1 inc.

DRY COW

Due 6/5/17 w/ 2nd calf to
200HO7450 Numero Uno

Gordon Cook, Jr
125 S Maple Street
Hadley, MA 01035
413-447-1461

Maple-Downs-I G W Atwood-ET
8956379 12/16 PTA +1917GTPI
-32M +.11% +29F +.02% +3P
3.64T +2.55UDC +2.82FLC 99%R
Goldwyn X EX-92 All-Am Durham

Cook-Farm Doma-Sile
3-06 VG-86 VVV+V 69775167
2-06 293 18820 4.5 844 3.6 673
3-05 199 17250 4.2 721 3.4 595
Sire: Ronelee Toystory Domain-ET

9th Dam:
Cook-Farm Valiant Farrah-ET
EX-90,3E GMD
11-01 365 29690 5.1 1514 3.4 1005
Lifetime 201210 5.0 10056 3.5 7055
10th Dam: (Pictured w/ Lot 77)
Herronholm Elevations Fayvor
EX-95,5E GMD-DOM
12-01 365 29060 4.5 1312 3.5 1009
Lifetime 246600 4.9 12046 3.6 6791

2nd Dam:
Cook-Farm Baxter Silly-ET
EX-90 EEVVE
2-00 326 23100 4.1 953 3.2 729
3-00 307 25800 4.1 1051 3.3 844
4-01 337 33970 4.3 1477 3.2 1072
5-02 365 35140 4.3 1499 3.2 1127
6-08 365 33020 4.3 1435 3.0 1001
7-10 365 38110 4.0 1542 3.0 1151
Life-to-Date 197400 4.2 8384 3.2 6254
***Due again in April**

3rd Dam:
Cook-Farm Style-O-ET
EX-90 EE+EV
5-04 365 36490 4.0 1453 3.2 1157
6-09 365 37650 4.2 1570 3.5 1325
Lifetime 156180 4.1 6480 3.5 5431

4th Dam: (Pictured above)
Cook-Farm Roy Freestyle-ET
EX-93,2E EEEEE
4-07 365 36470 3.8 1392 3.1 1121
Lifetime 184390 3.8 7009 3.2 5953

5th Dam: (Pictured above)
Cook-Farm BWMarsh Freeze-ET
EX-91 EEEEE GMD
2-01 365 34080 4.0 1365 3.3 1111

6th Dam:
Cook-Farm BKS Fire 1-ET
EX-93,3E GMD-DOM
3-06 365 42090 4.0 1665 3.2 1340
Lifetime 228130 4.0 9184 3.2 7195

7th Dam:
Cook-Farm Leadman Future
EX-91,4E EEVVE GMD-DOM
4-11 365 34220 4.1 1415 3.4 1179
Lifetime 222620 4.3 9609 3.4 4287

8th Dam:
Cook-Farm Mark Flirt EX-90 GMD
4-06 365 34300 4.5 1534 3.2 1101
Lifetime 127500 4.7 5954 3.4 4287